

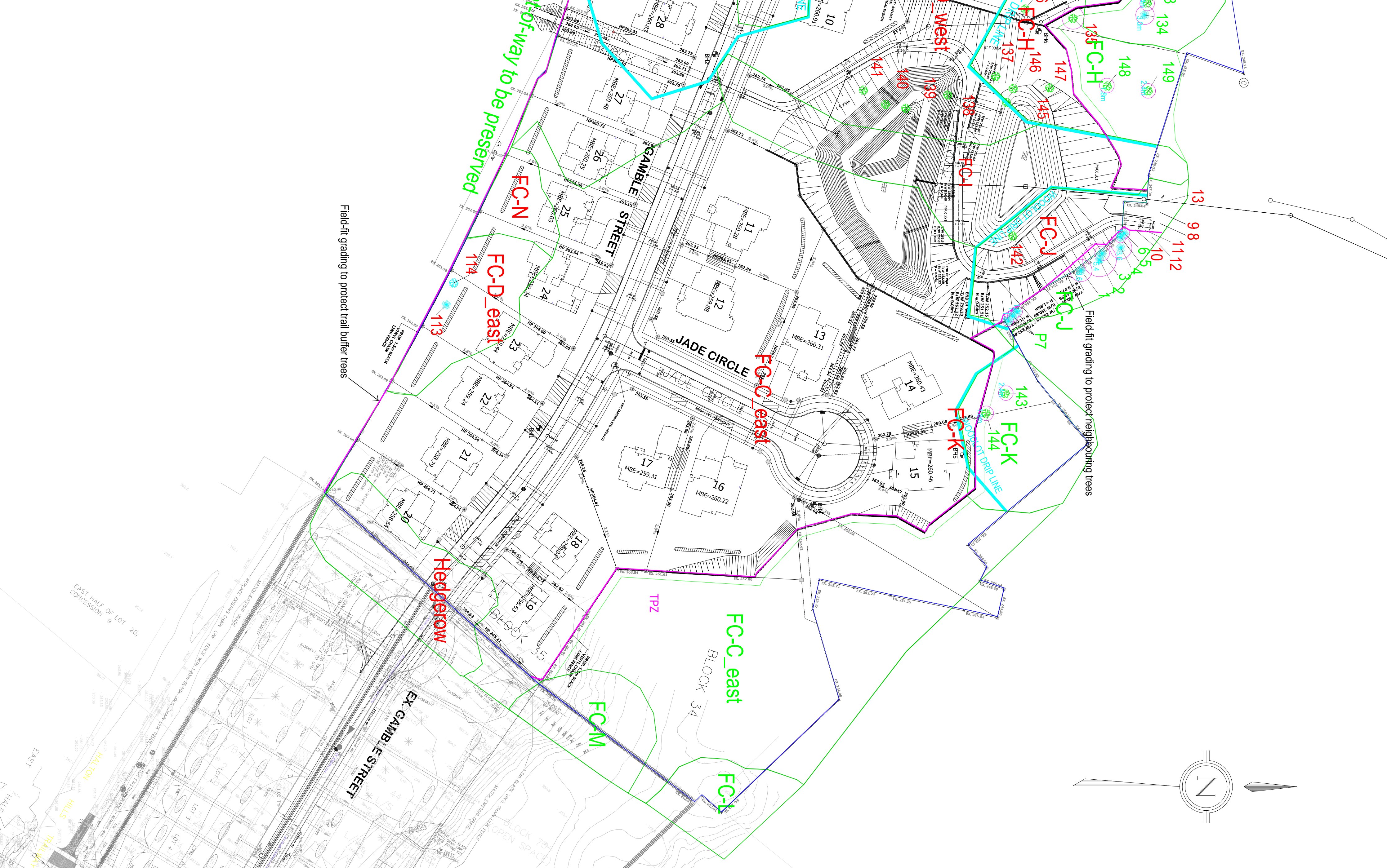
Restoration:

- Compensation for the removal of trees will be required. Refer to the EIR for restoration areas and details.

Table 1 - Tree Inventory - Specimen Trees

Tree #	Scientific Name	Common Name	DBH	T	CS	CV	CB	Comments
1	<i>Fagus grandifolia</i>	American Beech	60	P-F	F	P-F	P-F	Stem wound (M), epicormic branching (M), broken branch wounds (M), beech bark disease
2	<i>Fagus grandifolia</i>	American Beech	-38	P-F	F	P-F	P-F	Cavity (L), beech bark disease, deadwood (M)
3	<i>Fagus grandifolia</i>	American Beech	-38	F	F	P-F	P-F	Beech bark disease, deadwood (M)
4	<i>Fagus grandifolia</i>	American Beech	-55	F	F	P-F	P-F	Beech bark disease, deadwood (M)
5	<i>Fagus grandifolia</i>	American Beech	-15	F	F	P-F	P-F	Beech bark disease
6	<i>Pinus strobus</i>	White Pine	-15	G	F	F	F	Leaf Larder
P7	<i>Thuja occidentalis</i>	Eastern White Cedar	-18.24	G	G	F	F	3 trees
8	<i>Thuja occidentalis</i>	Eastern White Cedar	30	G	G	G	G	Multi-stemmed
9	<i>Thuja occidentalis</i>	Eastern White Cedar	13.25	G	G	G	G	Stem is bearing severely, booming
10	<i>Catalpa</i>	Malus parviflora	14	P	P	P	P	Evidence of early EAB activity
11	<i>Fraxinus pennsylvanica</i>	Green Ash	25	G-F	G-F	G-F	G-F	Stem is bearing severely, booming
12	<i>Fraxinus pennsylvanica</i>	Green Ash	14	G	G	F	F	Evidence of pruning
13	<i>Juglans nigra</i>	Black Walnut	16	G-F	G-F	F	F	Leaf Larder, exposed roots (L)
113	<i>Pinus strobus</i>	White Pine	25	G	G	G	G	Co-dominance at 2m
114	<i>Ulmus americana</i>	White Elm	34	G	G	G	G	Co-dominance at 2m
115	<i>Fraxinus americana</i>	White Ash	25	G	G	G	G	Co-dominance at 2m
116	<i>Prunus serotina</i>	Black Cherry	34.5	G	G	G	G	Co-dominance @ 2 m
117	<i>Fraxinus americana</i>	White Ash	31	G	G	F	30	Grapevine competition (M)
118	<i>Juglans nigra</i>	Black Walnut	25	G	G	G	G	Grapevine competition (M)
119	<i>Fraxinus americana</i>	White Ash	34	G	G	G	G	Grapevine competition (M)
120	<i>Fraxinus americana</i>	White Ash	29	G	G	G-F	15	Grapevine competition (M)
122	<i>Juglans nigra</i>	Black Walnut	25	G	G	G	G	Grapevine competition (L)
123	<i>Juglans nigra</i>	Black Walnut	25	G	G	G	G	Grapevine competition (L)
124	<i>Tilia americana</i>	American Basswood	-22-43	F	G	G-F	10	Co-dominance @ base, stems lashed, broken branches (L), decay at base, diseased
125	<i>Tilia americana</i>	American Basswood	54	G	G	G-F	G-F	Diseased
126	<i>Tilia americana</i>	American Basswood	50	G	G	G-F	G-F	Diseased
127	<i>Tilia americana</i>	American Basswood	36	G	G	G	G	Broken branches (L), grapevine competition (L), stem wounds (L), barkwax embedded in trunk
128	<i>Pinus strobus</i>	White Pine	69	G	G	G	G	Broken branches (L), grapevine competition (L), barkwax embedded in trunk
130	<i>Fraxinus americana</i>	White Pine	27	G	G	G	G	
131	<i>Fraxinus americana</i>	White Ash	27	G	G	G	G	
132	<i>Fraxinus americana</i>	White Ash	30	G	G	G	G	
133	<i>Pinus strobus</i>	White Pine	35.5	G	G	G	G	Broken branches (L)
134	<i>Pinus strobus</i>	White Pine	41.5	G	G	G	G	Broken branches (L)
135	<i>Acer saccharum ssp.</i>	Sugar Maple	53.5	G	F	F	F	Stem wounds (L)
136	<i>Fraxinus americana</i>	White Ash	32	F	F	F	F	Broken branches (L), grapevine competition (M)
137	<i>Juglans nigra</i>	Black Walnut	28	G	G	G	G	Grapevine competition (L)
138	<i>Juglans nigra</i>	Black Walnut	25	G	G	G	G	Grapevine competition (L)
139	<i>Juglans nigra</i>	Black Walnut	38	G	G	G	G	Grapevine competition (M)
140	<i>Juglans nigra</i>	Black Walnut	30	G	G	G	G	Grapevine competition (L)
141	<i>Fraxinus americana</i>	White Ash	31.5	G	G	G	15	Grapevine competition (L)
142	<i>Fraxinus americana</i>	White Ash	28	G	G	G	G	Co-dominance @ base, pruning wounds (L)
144	<i>Juglans nigra</i>	Black Walnut	20	G	G	G	10	Grapevine competition (L), stem wounds (L)
145	<i>Juglans nigra</i>	Black Walnut	25.31	F	G	G	G	Co-dominance @ 1 m, grapevine competition (L), stem wounds (L)
146	<i>Juglans nigra</i>	Black Walnut	28	G	G	F	20	Grapevine competition (M)
147	<i>Fraxinus americana</i>	White Ash	27	G	G	F	20	Grapevine competition (L)
148	<i>Juglans nigra</i>	Black Walnut	25.5	G	G	G-F	15	Grapevine competition (L)
149	<i>Fraxinus americana</i>	White Ash	33	G	G-F	G	G	Grapevine competition (M)

Codes	TI	Trunk Integrity
CS	CS	Crown Structure
CV	CV	Crown Vigor
G	G	Good
F	F	Fair
P	P	Poor
L	L	Light
M	M	Moderate
H	H	Heavy
D	D	Dead



LEGEND

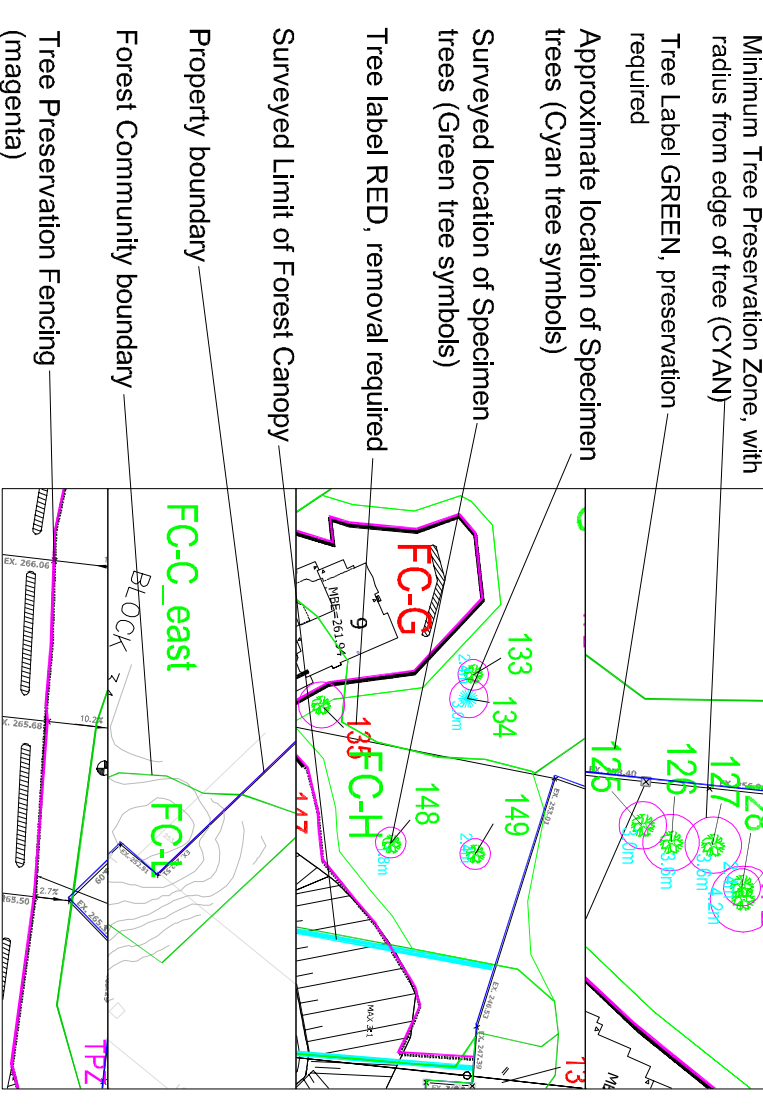
Forest and Tree Inventory
Refer to the EIR for the forest assessment, and tree inventory. All tree resources and vegetation communities located within subject property's limits were included in the inventory.

Tree Removals
The removal of 21 specimen trees and most vegetation communities is required to accommodate current site planning including earth works and construction. Required tree removals are indicated with RED Labels.

Tree Preservation

Preservation of Trees 1+77 and 125-132 and portions of select vegetation communities may be possible as indicated with GREEN labels. Minimum Tree Preservation Zones and required Tree Preservation Fencing are indicated with Magenta. TPZ labels represent minimum distances for construction and grading activities. Fencing is shown on subject property. Refer to Tree Protection Plan Notes for preservation details.

Minimum Tree Preservation Zone, with radius from edge of tree (CYAN)
Tree Label GREEN, preservation required
Approximate location of Specimen trees (Cyan tree symbols)



Tree Protection Plan Notes

TREE PROTECTION ZONE: Note: No construction activity including grade changes, surface treatments or excavations of any kind is permitted within the area identified on this plan as a Tree Protection Zone (TPZ). No root cutting is permitted. No storage of materials or fill is permitted within the TPZ. No movement or storage of vehicles or equipment is permitted within the TPZ. The area(s) identified as a TPZ must remain undisturbed at all times.

TREE PROTECTION BARRIERS: Pajige wire fencing with stiletto control fabric placed on metal T-posts at 3 metre centers is required as tree protection barriers or as permitted by the Town of Halton Hills. All supports and backfilling of earth or gravel to safely secure the barrier should be outside the Tree Protection Zone (TPZ). All such supports and bracing should minimize damage to roots outside the TPZ.

General Note: Prior to the commencement of any site activity the tree protection barriers specified on this plan must be installed and notice provided to Town of Halton Hills Staff. The tree protection barriers must remain in effective condition until all site activities including landscaping are complete. A Tree Protection Zone sign supplied by the Town of Halton Hills must be attached to front of the barrier. Written notice must be provided to the Town of Halton Hills Planning Department prior to the removal of the tree protection barriers.

ARBORECU LTURAL WORK: Note: Any roots or branches which extend beyond the tree protection zone(s) indicated on this plan which require pruning, must be pruned by a Qualified Arborist or other tree professional as approved by the Town of Halton Hills. All pruning of tree roots and branches must be in accordance with good arboricultural standards.

Issue/Revisions	Date	By
1 Report Submission	Aug 08	JR
2 Report Revisions	Nov 12	CB
3 Report Revisions	Feb 13	CB
4 Report Revisions	June 16	CB
5 Report Revisions	Jan, 17	CB
6 Report Revisions - new grading plan	Feb, 18	CB
7 Figure Revisions - discussion with Town	Mar, 19	CB
8		CB

Base Data: Tom Komar (Survey), Condeland Engineering Ltd. (Site Plan)

KUNTZ FORESTRY CONSULTING INC.
1461 Lakeshore Road West
PO Box 1287 Lakeshore, ON L8K 0S3
1-289-937-1871 / 860-883-0390
www.kuntzforestry.ca

Matthews Planning & Management Ltd.
1470 Hurontario St.
Mississauga, Ontario, L5G 3H4

Eden Oak, Glen Williams
Town of Halton Hills, Ontario

Topographic and Proposed Site Plan Tree Inventory and Preservation Plan

Project: P213 Figure: 1
Date: March 2019
Scale: 1:1700